

# RUDCHEM PY SPRAY

## DIRECTIONS FOR USE



### SITUATION

**AGRICULTURAL BUILDINGS**  
Storage Sheds, Milking & Poultry Sheds,  
Barns, Stables, Kennels.

### DOMESTIC & PUBLIC SERVICE AREAS

Food Premises, Hotels, Motels, Hospitals, Warehouses, Factories,  
Ships, Clubs, Schools, Homes, Shipping Containers, Meterboxes,  
Telecom, Electricity and Gas Installations.

**INSECTS CONTROLLED** Flies, Mosquitoes, Moths, Ants, Silverfish,  
Fleas, Cockroaches, Grain Weevils, Spiders, Earwigs.

**CRITICAL COMMENTS** Spray in one second bursts in centre of room,  
1 second per 30 cubic metres of air volume. Keep windows and doors  
closed for best result. For the control of crawling insects spray into  
cracks and crevices and pallets and cupboards where these insects  
hide. Natural Pyrethrum has a flushing action causing insects to  
emerge from their hiding places and thus take up insecticide and die.  
**USE THIS PRODUCT ONLY AS DIRECTED.**

**CAUTION** DO NOT allow chemical or spray to get into drains, sewers,  
streams or ponds. DO NOT spray directly on humans, pets, exposed  
food, food preparation areas or food utensils.

**STORAGE AND DISPOSAL** PRESSURISED DISPENSER. PROTECT  
FROM SUNLIGHT AND DO NOT EXPOSE TO TEMPERATURES  
EXCEEDING 50°C. DO NOT PIERCE OR BURN, EVEN AFTER USE.  
**EXTREMELY FLAMMABLE. DO NOT SPRAY ON A NAKED FLAME  
OR ANY INCANDESCENT MATERIAL. KEEP AWAY FROM SOURCES  
OF IGNITION – NO SMOKING.** Dispose of can by putting in garbage,  
or leaving it at an appropriate metal recycling collection point.

### KEEP OUT OF REACH OF CHILDREN

**SAFETY DIRECTIONS** Repeated exposure may cause allergic  
disorders. Sensitive workers should use protective clothing. Avoid  
contact with eyes and skin. Do not inhale spray mist.

**FIRST AID** If poisoning occurs, contact a doctor or Poisons Information  
Centre. If in eyes, hold eyes open, flood with water for at least  
15 minutes and see a doctor. If sprayed on skin, wash thoroughly.  
If sprayed in mouth, rinse mouth with water.

**WARNING: DO NOT DELIBERATELY SNIFF THIS PRODUCT.  
SNIFFING MAY HARM OR KILL YOU.**

**HIGHLY FLAMMABLE: KEEP AWAY FROM NAKED FLAME**  
Propellant – hydrocarbon.

NRA approval No: 32708/0702.

Batch No: See base of can.

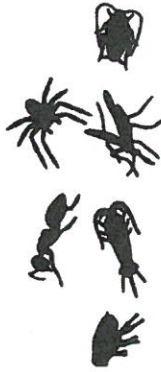
READ SAFETY DIRECTIONS BEFORE USING

## Rudchem



Pyrethrum ACTIVE CONSTITUENTS

**10 g/kg PYRETHRINS      50 g/kg PIPERONYL BUTOXIDE**



For control of insect pests in situations  
as per directions for use.

**NET 300g**

MANUFACTURED BY

**C. RUDDUCK PTY. LTD.**

**UNIT 2, 247 INGLES STREET, PORT MELBOURNE 3207  
EMERGENCY TELEPHONE NUMBER: (03) 9676 4444**